



# EARTH PRIESTESS TEMPLE ARTS TRAINING

~ FACILITATORS IMMERSION ~



MEXICO

OCT 1-13

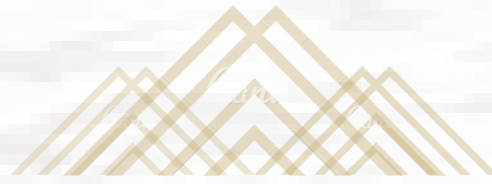


# WELCOME SISTER

RECEIVE A DEEP BREATH FROM THE EARTH  
AND LAND WITH US HERE FOR A MOMENT



THIS IS AN INVITATION  
FOR YOU WHO SIMPLY FEEL IN YOUR  
WOMB, IN YOUR HEART & SPIRIT  
THE CALL TO EMBODY DEEPER IN YOUR  
UNIQUE EARTH PRIESTESS PATH



As we are in the midst of the turning of ages upon the Earth as old narratives are being dismantled and brought into light, crumbling and rebirthing the new, it is more important than ever that woman embodies her Self sourcing and sovereign connection to the Earth, the elements and our service to the Whole.

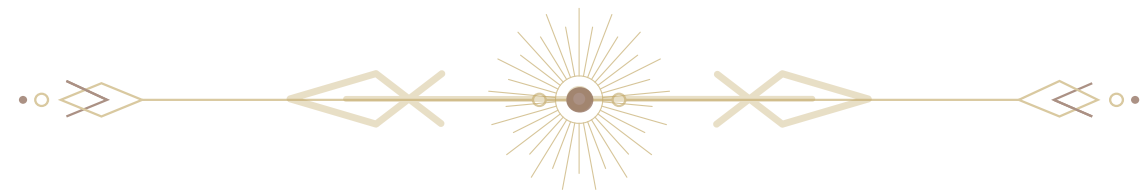
As Mother Gaia herself is calling us all at this time



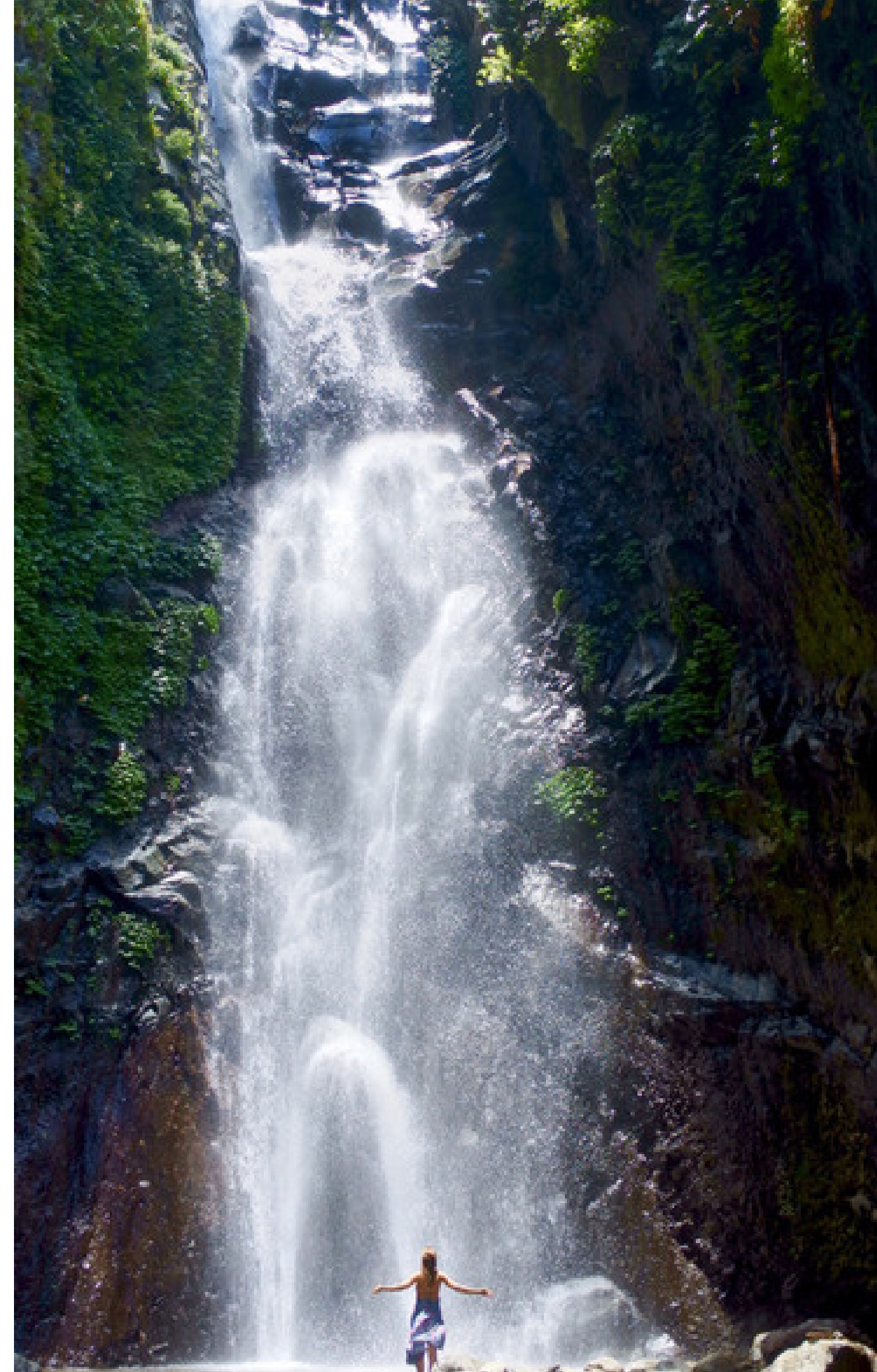



We ask ourselves

- How may I heal and expand myself fully, so that I can stand solid in my essence, in connection, in relation, in service to the Earth at this time?



The Earth Priestess Path is a journey for women of all walks of life to reclaim, rewire and resource our birthright as daughters and guardians of Gaia.





YOU ARE WELCOME TO WALK THIS  
PATH IN SISTERHOOD WITH  
THOUSANDS OF WOMEN WEAVING  
ACROSS THE PLANET, IN A UNIFIED  
PRAYER-FIELD OF EMBODIMENT,  
HARMONY AND GRACE  
FOR ALL BEINGS.



The Earth Priestess Temple Arts Training is a lifelong initiation between you, the Earth, the Elements, Spirit & your Body Temple.



When we gather for intensive immersions in this way, it is within the innerstanding that Pacha Mama is our teacher, and that an Earth Priestess Path is a dedication to listening and learning from Her.



We share tools, teaching  
transmissions & practices rooted in  
feminine shamanic traditions and  
priestess temple arts,  
however



your own inner knowing, guidance &  
intuition will always lead the way







ELEMENTAL WOMB

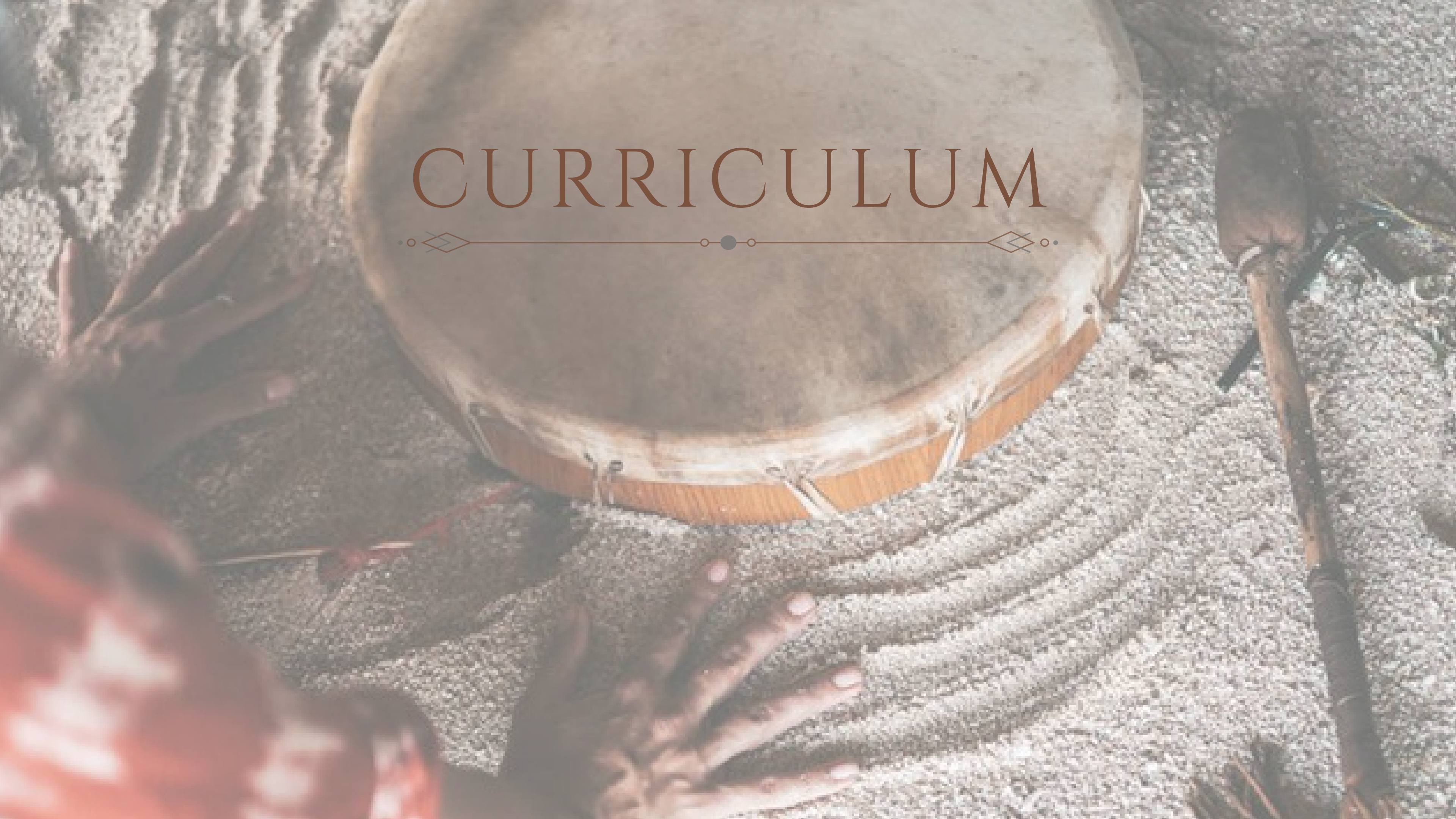
# ROOTS TEMPLE

## PREREQUISITE

For this 13day in-person Temple Immersion, we require that you have already completed the 28 day Foundational Earth Priestess Roots Temple Training (Online), or another extensive Immersion with us beforehand. Click [here](#) for more information.



# CURRICULUM



THE FOUNDATIONS ARE PREREQUISITE  
AS WE IN THIS TRAINING DIVE STRAIGHT INTO:


- © Ceremonial Spaceholding
- © Energy training for holding 1:1 & Group Sessions
- © Earth Service & Soul Calling
- © Womb Voice training & Healing with Sound
- © Embodiment & Awakening of Kundalini Earth Shakti
- © Temple Arts Bodywork & Womb Massage
- © Somatic Integration & Emotional Communication  
in Spaceholding







- © Elemental Altar Craft & Field-gridding
- © Multidimensional awareness & holding space for clearing work
- © Ceremonial Fire Training
- © Spirit of Medicine Drum & Prayersong
- © Water Ceremonies & Anointment Rituals
- © Earth Prayer & Collective Dreamweaving
- © Sweatlodge & Medicine Wheel



We will also reweave some of the  
Earth Priestess Arts Temple Foundations  
in this immersion, for you to train &  
embody deeper within:

© Earth Shakti Embodiment Series

© Womans Energy Bodies  
& Vitality Cultivation

© Red Tent & Sacred Moon Cycles

© Shakti Yoga & Woman's Sensuality

An aerial photograph of a white temple complex built on a hillside. The temple features a central arched entrance and a large, illuminated dome. The surrounding area is lush with green trees and vegetation. The text "SANAH TEMPLE SPACE" is overlaid in white, serif font across the center of the image.

SANAH  
TEMPLE SPACE



This training will be held at our dear Mexican friends new Temple Sanctuary SANAH in Yucatán, Tulum.

We have personally witnessed Ricardo and his amazing family birth this vision into manifesting with an energetic precision, care and love beyond measure.



Each sleeping/dreaming temple is truly a priestess nest for you to rest & recharge in between sessions.








The extraordinary temple space that we work in, along with the sound dome, healing spa, fireplace, fresh cenote-water filled pool, herbal steam sauna & medicinal garden, all serves our journey together



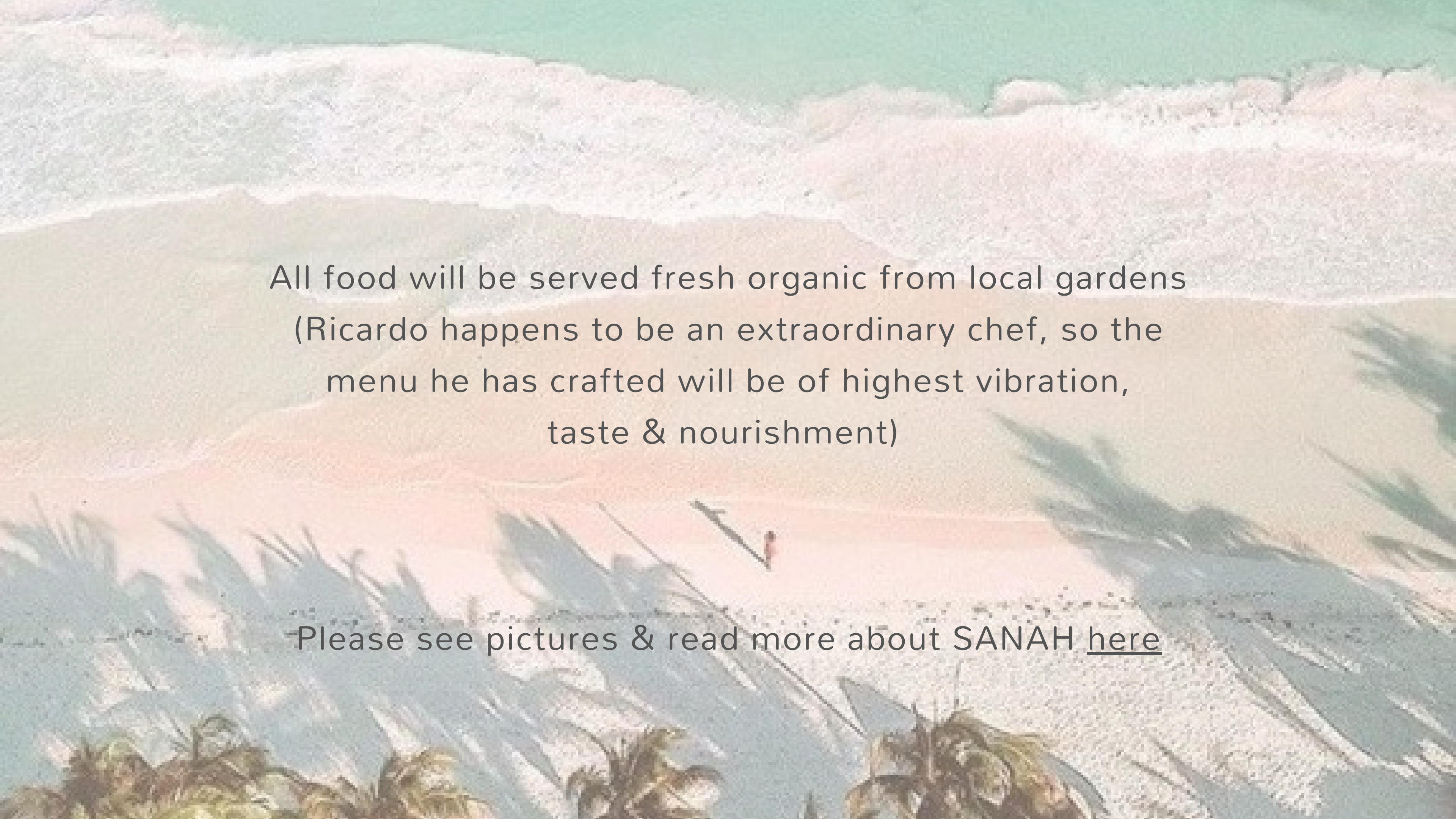






A photograph of a tropical cenote. The water is exceptionally clear, showing a vibrant turquoise hue. The surrounding environment is lush with various tropical plants, including palm trees and dense foliage. On the left bank, there is a wooden platform or viewing deck. The water's surface is calm, creating a clear reflection of the sky and the surrounding vegetation. Two thin lines, possibly ropes or cables, stretch across the water from the right side towards the center.

Cenote Cristal is a short walk from SANAH,  
(and Mama Ocean only 10min drive) where we will also be  
working with our water rituals

An aerial photograph of a tropical beach. The water is a vibrant turquoise color, transitioning to a white sandy beach. In the foreground, there are several palm trees with green fronds. The overall scene is bright and sunny.

All food will be served fresh organic from local gardens  
(Ricardo happens to be an extraordinary chef, so the  
menu he has crafted will be of highest vibration,  
taste & nourishment)

Please see pictures & read more about SANAH [here](#)



# FACILITATORS





# ANNA MARIA

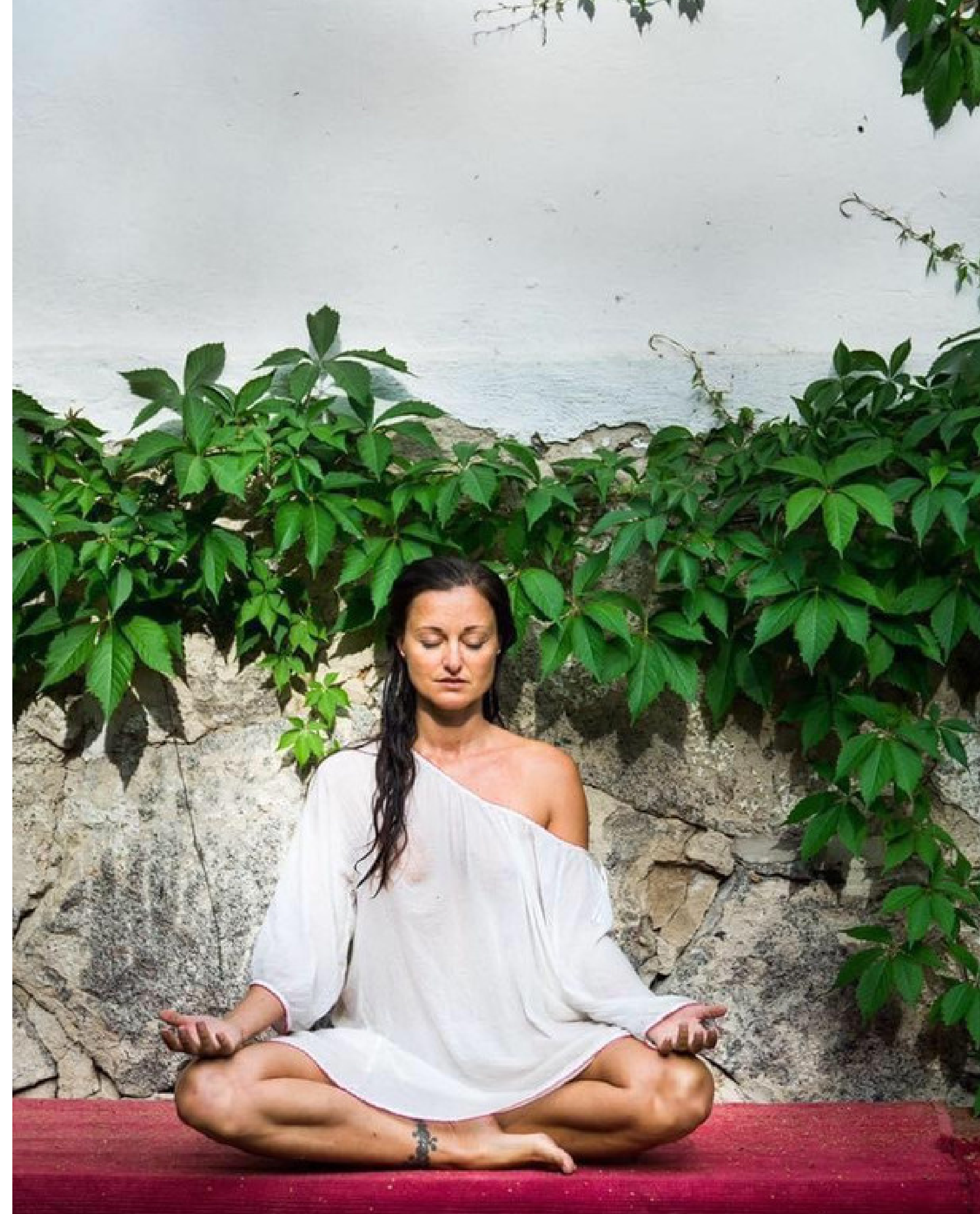
Anna Maria will be your primary support and spaceholder throughout this training. She has been walking the shamanic path of womb wisdom and priestess temple arts for the last decade, in deep devotion to her own inner evolution and service to the Earth.

Read more about Anna-Maria [here](#)

# MIRA MOONYA

Mira Dakini's life is a deeply intuitive, creative and explorative journey of the embodiment and union of Spirit and Body. Since 1995, she have been traveling around the world, living in alternative healing communities, studying in the fields of yoga, tantra, relating, movement, touch, healing and meditation.

Read more about Mira [here](#)





# ENERGY EXCHANGE



For 13 nights in your double shared priestess temple room, with all meals, teachings, manuals, ceremonies & facilities included, the energy exchange of this Facilitator's Immersion is

**3300 EUR**

Early bird: 3000EUR  
before July 22nd

**Deposit 50% of tuition.**

Full payment completed 1 month prior to training, unless we have agreed on a payment plan.







## Cancellation Policy

Non refundable deposit  
- may be transferred to future training

## Giving back

Parts of the abundance generated from this training gets donated to support local villages and traditions in Mexico & Bali



# CONFIRMATION & REGISTRATION

The group field is limited to 13-20 women  
To apply and hold your space - Enter [here](#)





PRE & POST TRAINING  
CEREMONIES





# THANK YOU SISTER

For your walk on this Earth.  
If this work calls your womb  
and soul, we are honored  
and grateful to share this  
journey & path with you.

Welcome to our Earth  
Priestess Temple Arts  
Sisterhood

